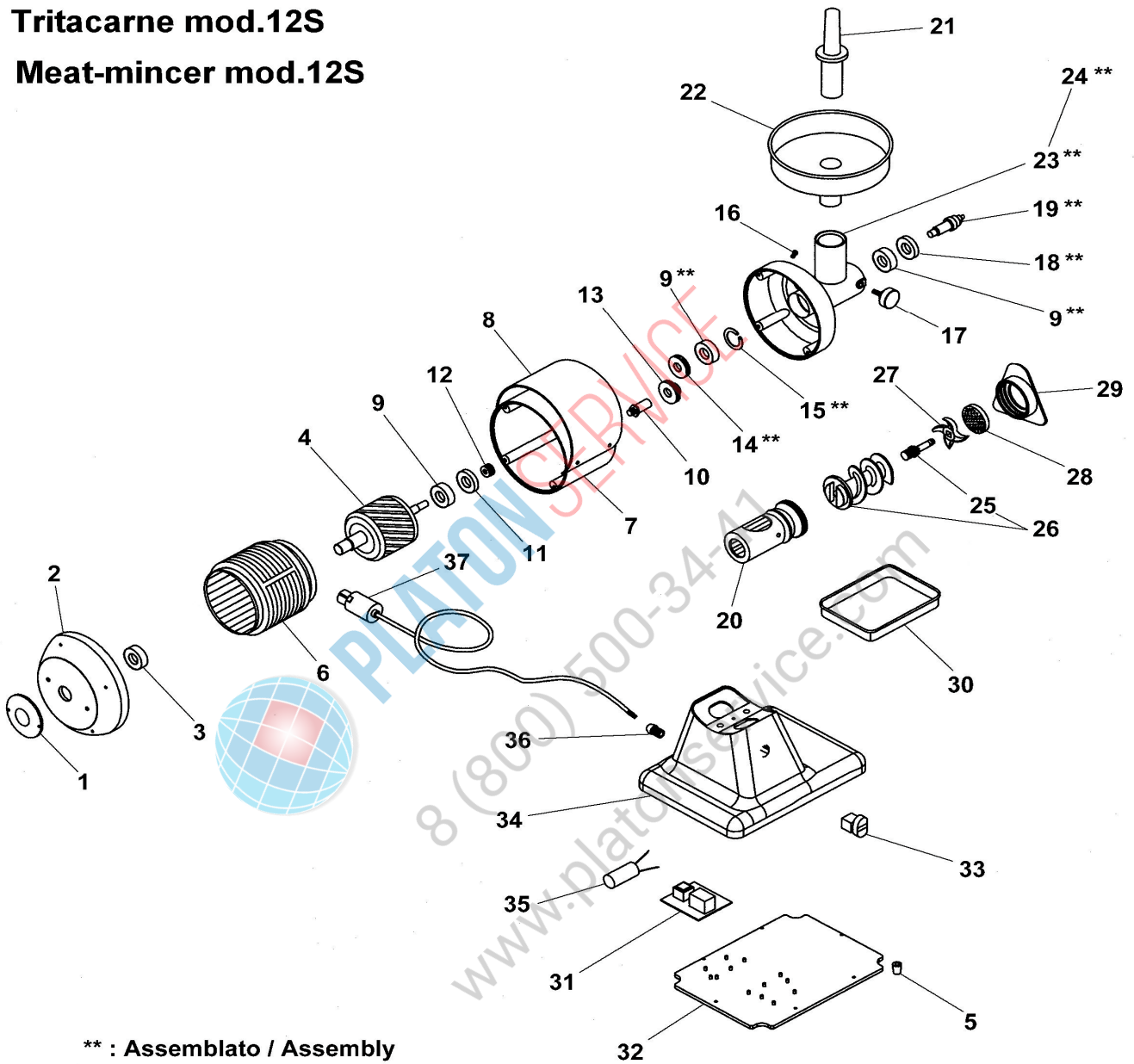


Tritacarne mod.12S
Meat-mincer mod.12S



TRITACARNE MOD.12S MEAT-MINCER MOD.12S

| Rif No | Codice Code | Caratteristiche Characteristics | Descrizione Description | |
|--------|-------------|---------------------------------|-------------------------|-----------------|
| 1 | SL2833 | | Coperchio | Cover |
| 2 | SL0186 | | Calotta | Calotte |
| 3 | SL0126 | 6203 ZZ | Cuscinetto | Bearing |
| 4 | SA7300 | 400V/3Ph/50Hz | Rotore | Rotor |
| 4 | SA7400 | 230V/1Ph/50Hz | Rotore | Rotor |
| 5 | SL0235 | | Piedino | Foot |
| 6 | SL0183 | 400V/3Ph/50Hz | Statore | Stator |
| 6 | SL0122 | 230V/1Ph/50Hz | Statore | Stator |
| 7 | SL0146 | | Carcassa | Housing |
| 7 | SL0123 | 01/04/00 f.p.(*) | Carcassa | Housing |
| 8 | SL0181 | | Copertura | Covering |
| 9 | SL0131 | 6203 2RS | Cuscinetto | Bearing |
| 10 | SL0124 | | Albero | Shaft |
| 11 | SL0127 | 17x40x7 | Paraolio | Oil seal |
| 12 | SL0128 | | Ingranaggio | Gear |
| 13 | SL0125 | | Ingranaggio | Gear |
| 14 | SL0130 | | Ingranaggio | Gear |
| 15 | SL0132 | ø40 | Seeger | Seeger |
| 16 | SL0133 | | Tappo | Tap |
| 17 | SL0138 | | Pomello | Knob |
| 18 | SL0139 | 25x40x7 | Paraolio | Oil seal |
| 19 | SL0140 | | Albero | Shaft |
| 20 | SL0142 | | Bocchettone | Sleeve |
| 21 | SL0134 | | Pestello | Pusher |
| 22 | SL0136 | | Tramoggia | Hopper |
| 23 | SL0137 | | Bocchettone | Sleeve |
| 24 | SA3700 | Assembly | Bocchettone | Sleeve |
| 25 | SL2521 | | Perno | Pivot |
| 25 | SL0822 | 10/06/02 f.p.(*) | Perno | Pivot |
| 26 | SA5300 | | Elica | Screw shaft |
| 26 | SA5100 | 01/01/00 f.p.(*) | Elica | Screw shaft |
| 27 | ////////// | | Coltello | Cutter |
| 28 | ////////// | | Piastra | Plate |
| 29 | SL0171 | | Volantino | Handwheel |
| 30 | SL0180 | | Recipiente | Container |
| 31 | SL0883 | | Scheda elettronica | Electronic card |
| 32 | SL2651 | | Fondo | Bottom |
| 32 | SL0184 | 20/03/03 f.p.(*) | Fondo | Bottom |
| 33 | SL0891 | | Pulsante | Push button |
| 34 | SL2566 | | Base | Base |
| 34 | SL0190 | 20/03/03 f.p.(*) | Base | Base |
| 35 | SL0177 | 16µF | Condensatore | Condenser |
| 37 | SL1841 | 3Ph+Gnd | Cavo elettrico | Electric cable |
| 37 | SL1671 | 1Ph+N+Gnd | Cavo elettrico | Electric cable |
| 38 | SL0235 | | Piedino | Foot |

(*): fuori produzione / out of production